

EXHIBIT A

EXHIBIT A – LOCATION AND LAND USE MAPS

As stated in R14-3-219, Exhibits to Application, Exhibit A(3) & A(4) of the Rules of Practice and Procedure Before Power Plant and Transmission Line Siting Committee:

“Where commercially available,** a topographic map, 1:250,000 scale, showing any proposed transmission line route of more than 50 miles in length and the adjacent area. For routes of less than 50 miles in length, use a scale of 1:62,500. If application is made for alternative transmission line routes, all routes may be shown on the same map, if practicable, designated by applicant’s order of preference.”

“Where commercially available,** a topographic map, 1:62,500 scale, of each proposed transmission line route of more than 50 miles in length showing that portion of the route within two miles of any subdivided area. The general land use plan within the area shall be shown on a 1:62,500 map required for Exhibit A-3, and for the map required by this Exhibit A-4, which shall also show the areas of jurisdiction affected and any boundaries between such areas of jurisdiction. If the general land use plan is uniform throughout the area depicted, it may be described in the legend in lieu of on an overlay.”

The following maps are provided pursuant to R14-3-219, Exhibits to Application, Exhibit A.

Exhibit A-1	Project Overview
Exhibit A-2	Land Ownership and Jurisdiction
Exhibit A-3	Existing Land Use
Exhibit A-4	Future Land Use

****** If a topographic map is not commercially available, a map of similar scale, which reflects prominent or important physical features of the area in the vicinity of the proposed site or route shall be substituted.

EXHIBIT A-1 – Project Overview

Figure A-1 below provides a map showing an overview of the entire Project as proposed in southern New Mexico and southern Arizona.

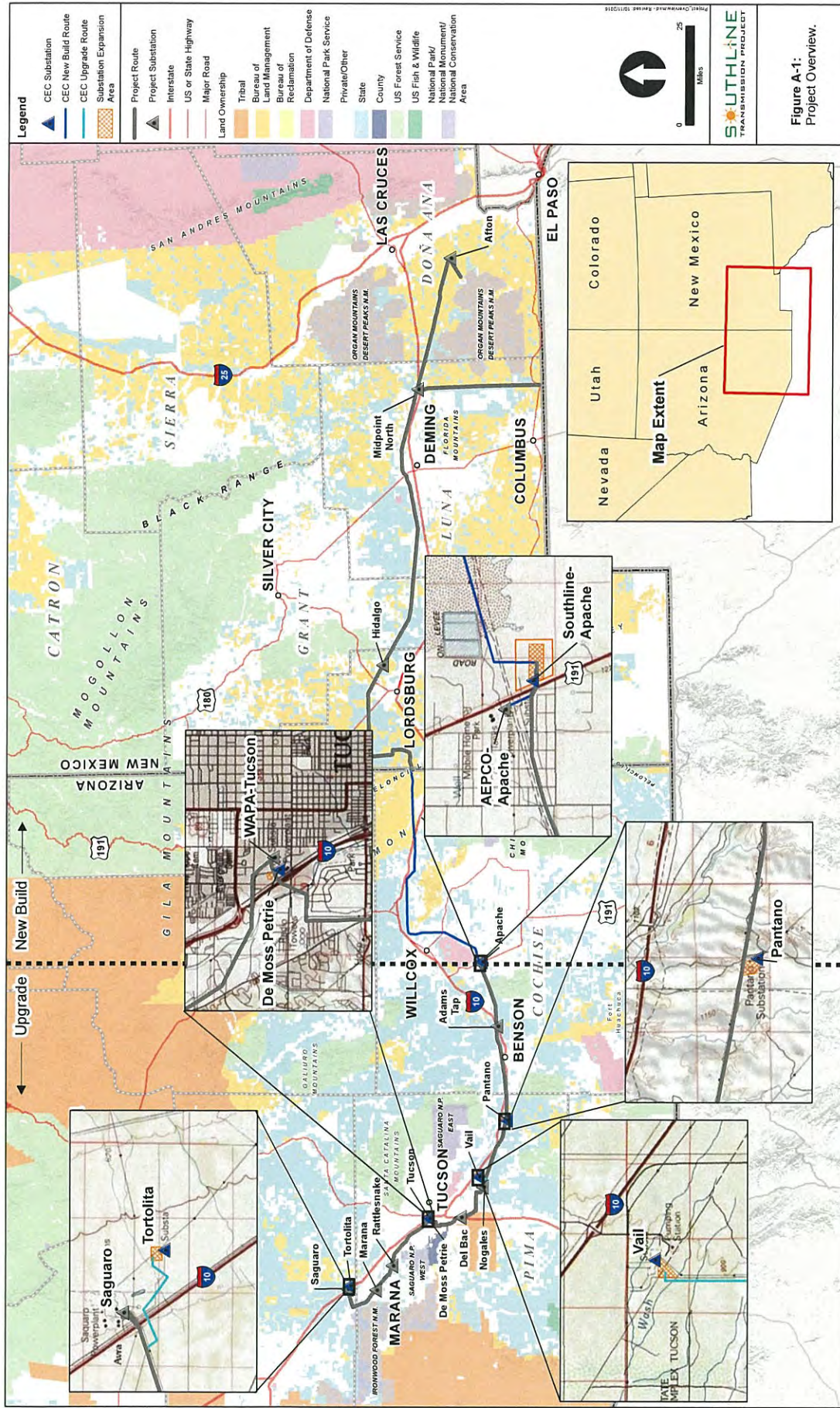


EXHIBIT A-2 – Land Ownership and Jurisdiction

Figures A-2a through A-2d provide maps showing the CEC Proposed Route and adjacent area on a topographic map at 1:250,000 scale. The CEC New Build Route is depicted on Figures A-2a and A-2b. The CEC Upgrade Route is depicted on Figures A-2c and A-2d. Land ownership and jurisdictional boundaries are also included on these maps.



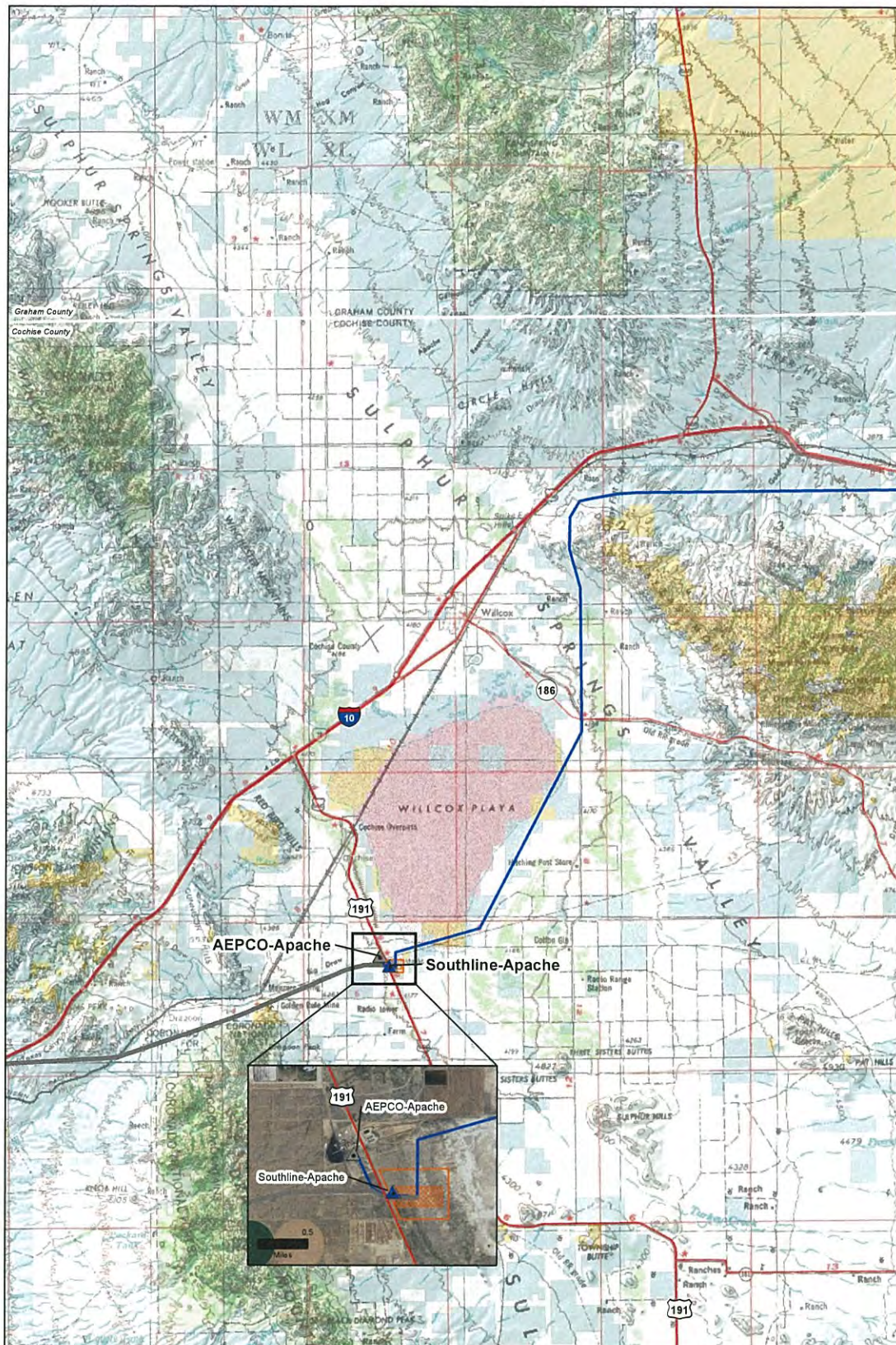
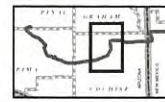


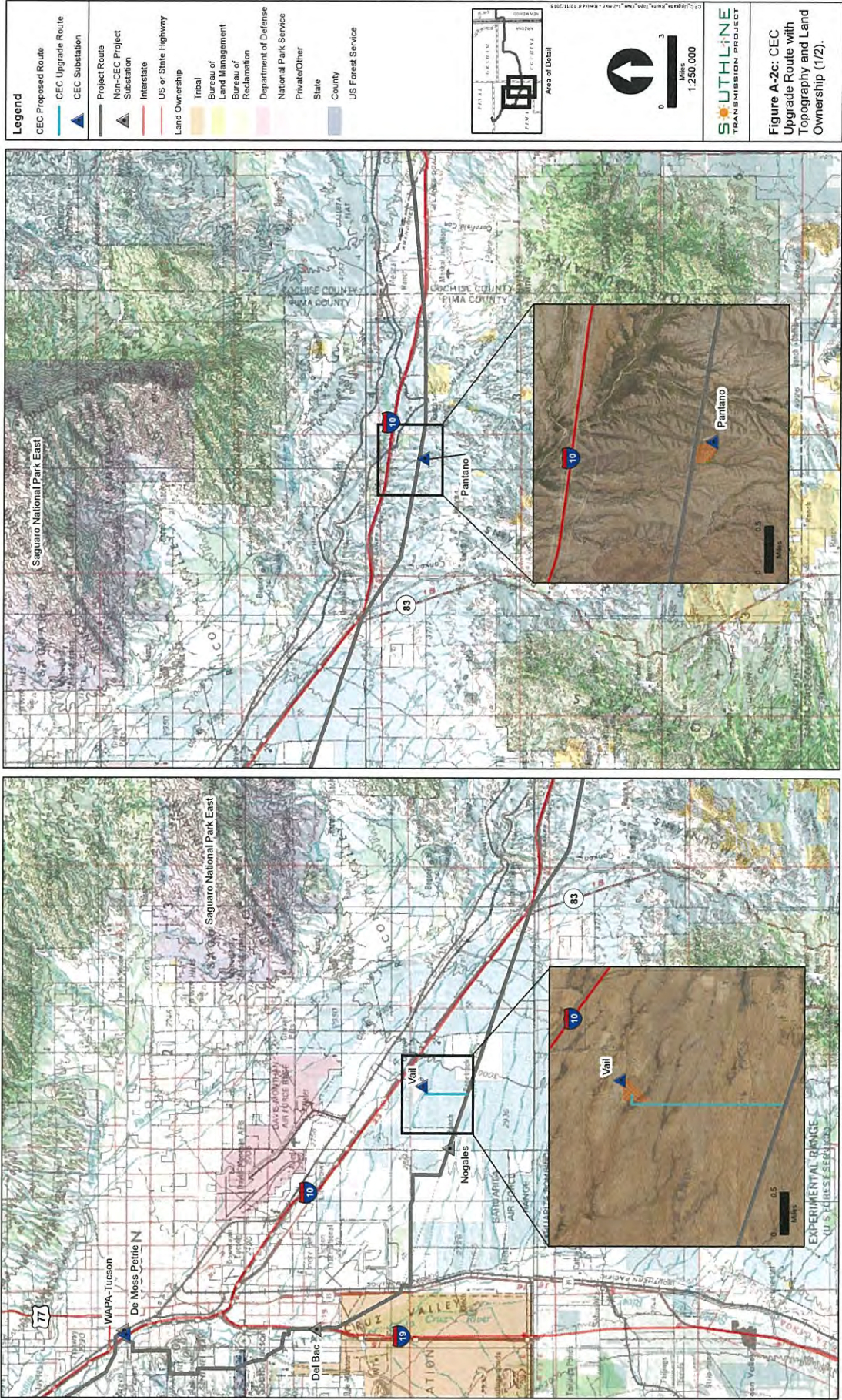
Figure A-2b: CEC New Build Route with Topography and Land Ownership (2/2).

SOUTHLINE
TRANSMISSION PROJECT

- CEC Substation
- CEC New Build Route
- Non-CEC Project Substation
- Project Route
- Substation Expansion Area
- Interstate
- US or State Highway
- Major Road
- Bureau of Land Management
- Department of Defense
- Private/Other State
- US Forest Service



CEC New Build Route Topo Own 2-2.mxd - Revised 10/12/2018



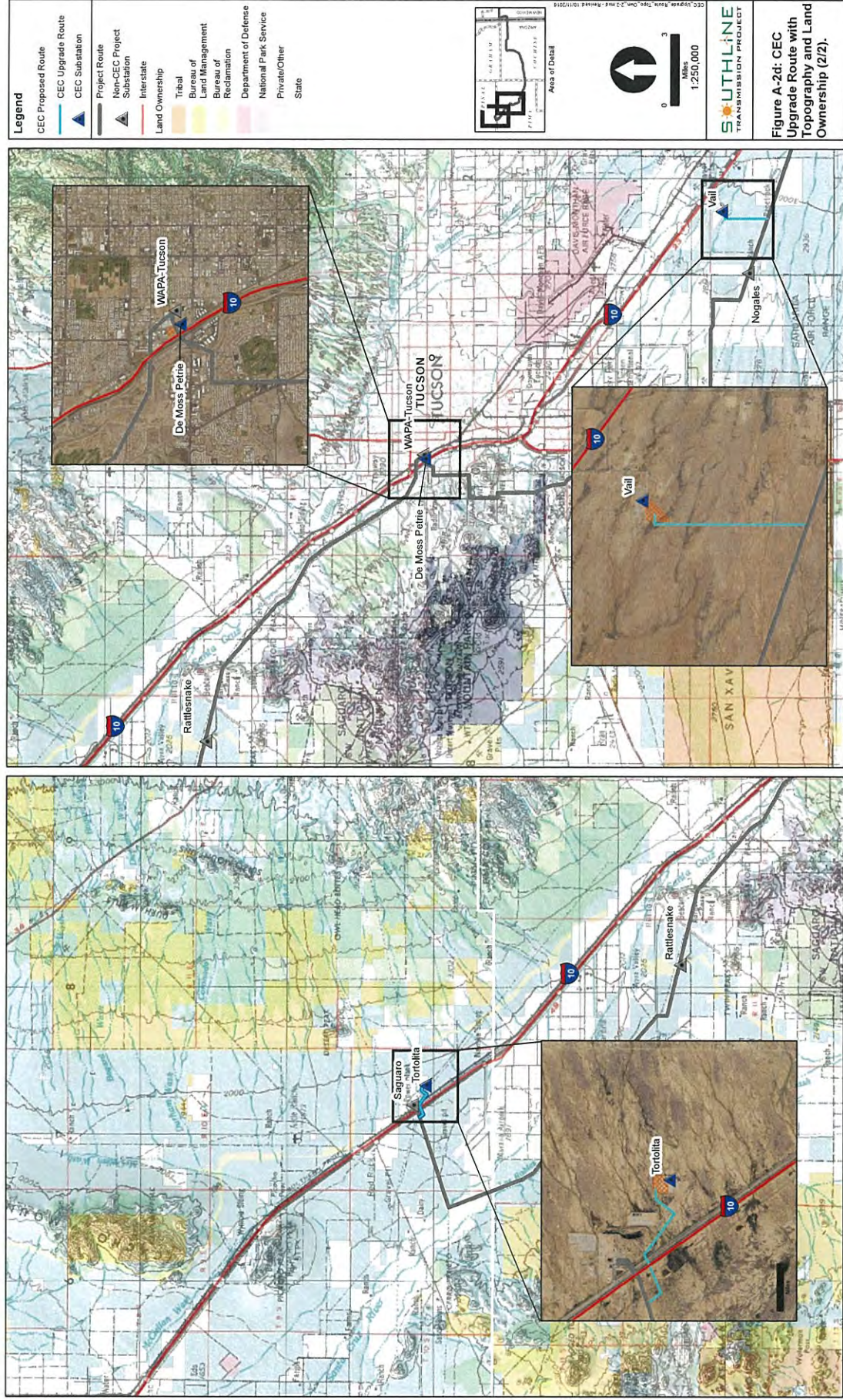
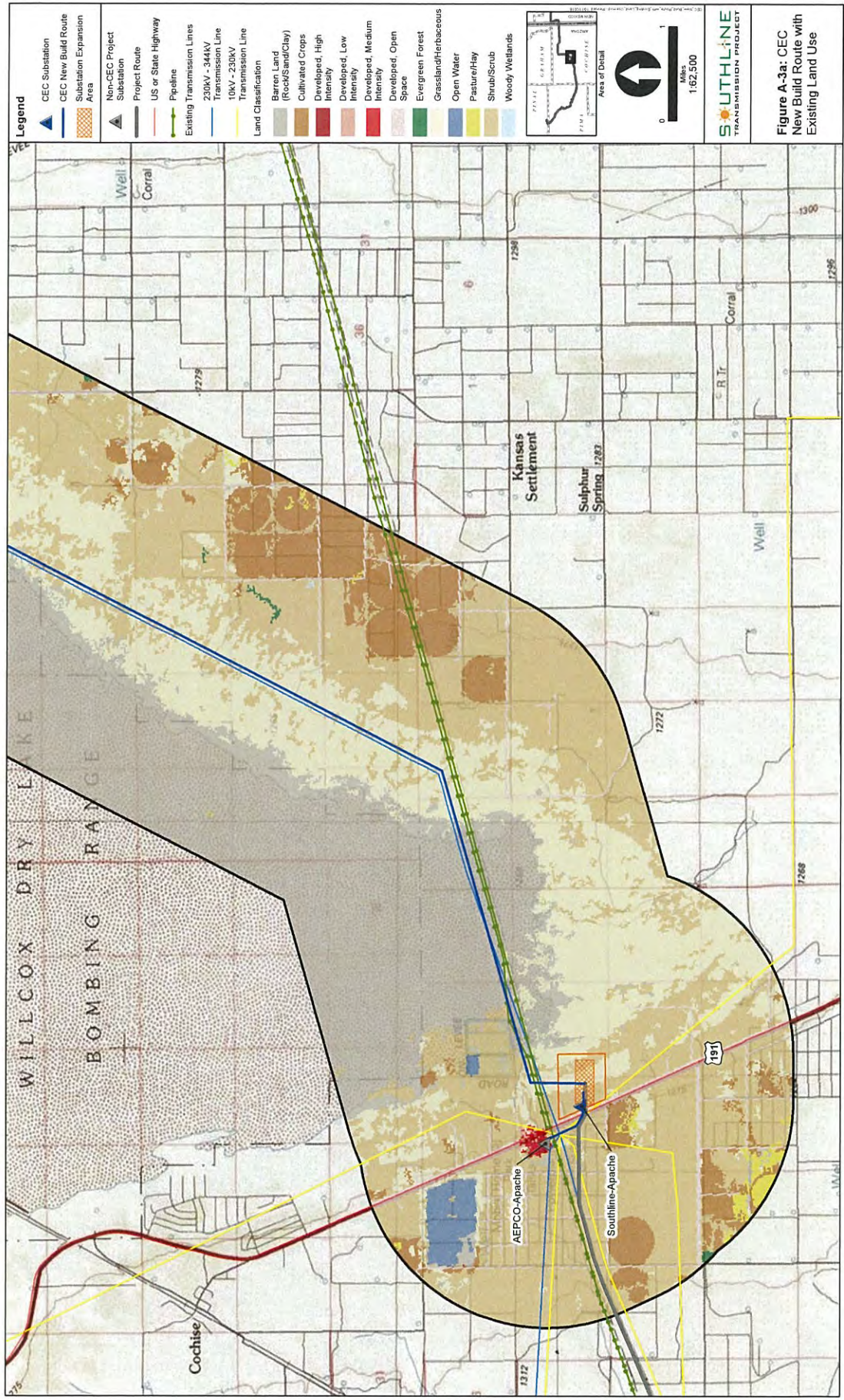


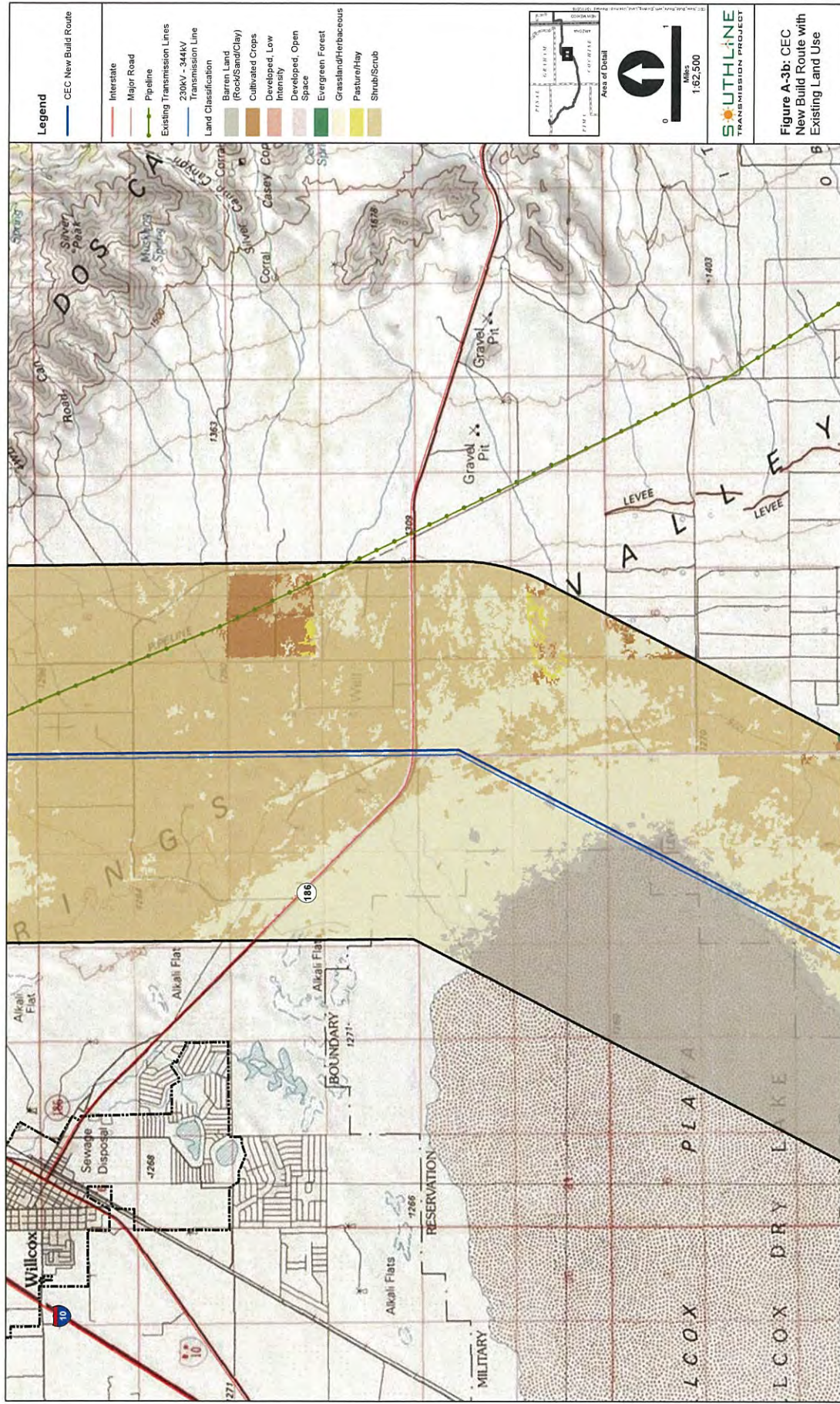
EXHIBIT A-3 – Existing Land Use

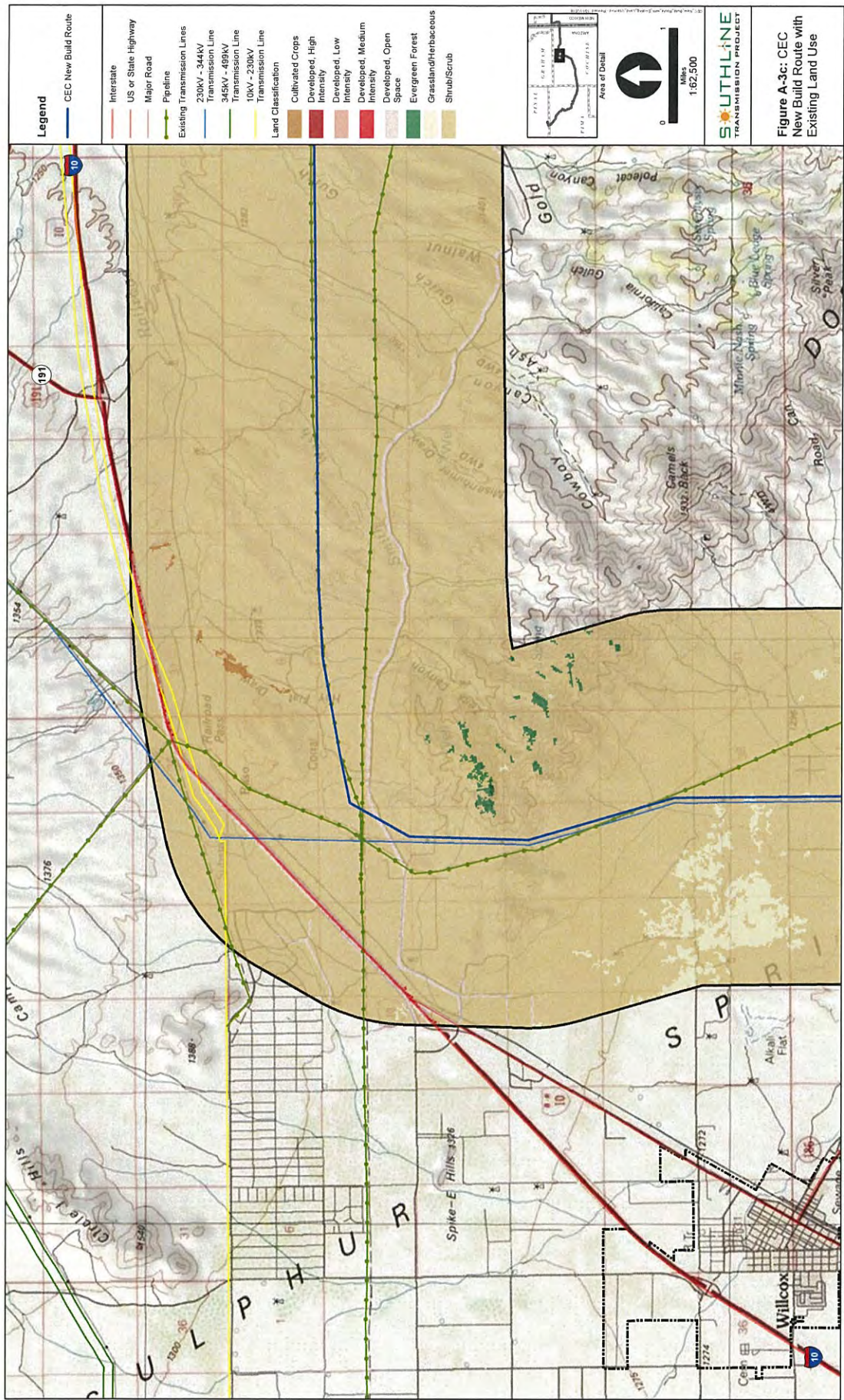
Figures A-3a through A-3h provide maps showing the CEC Proposed Route and adjacent area on a topographic map at 1:62,500 scale. The CEC New Build Route is depicted on Figures A-3a through A-3f. The CEC Upgrade Route is depicted on Figures A-3g and A-3h. Jurisdiction and general land use are also included on these maps.

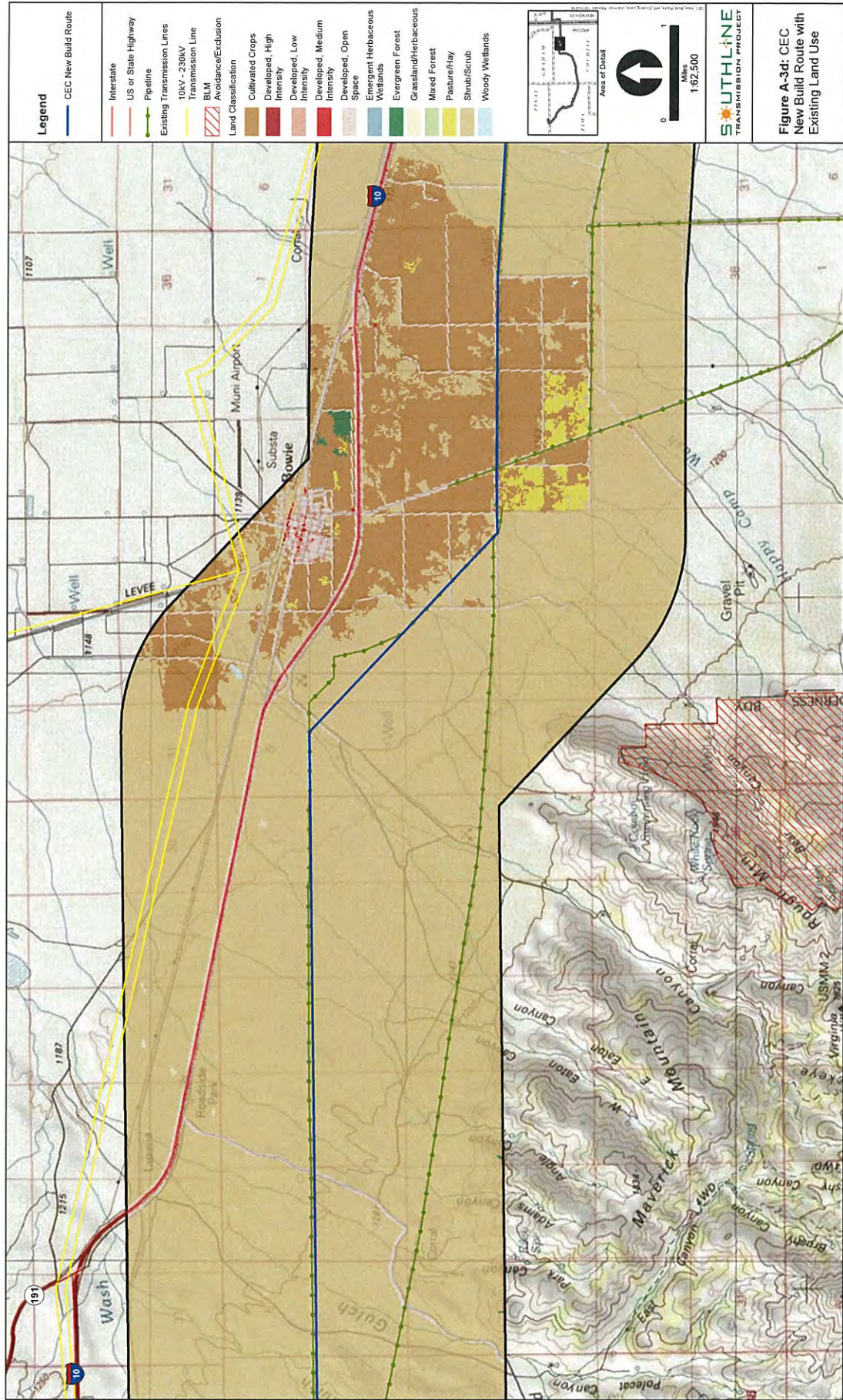
General land use is based on geographic information system ("GIS") National Land Cover database ("NLCD") 2011 data.¹

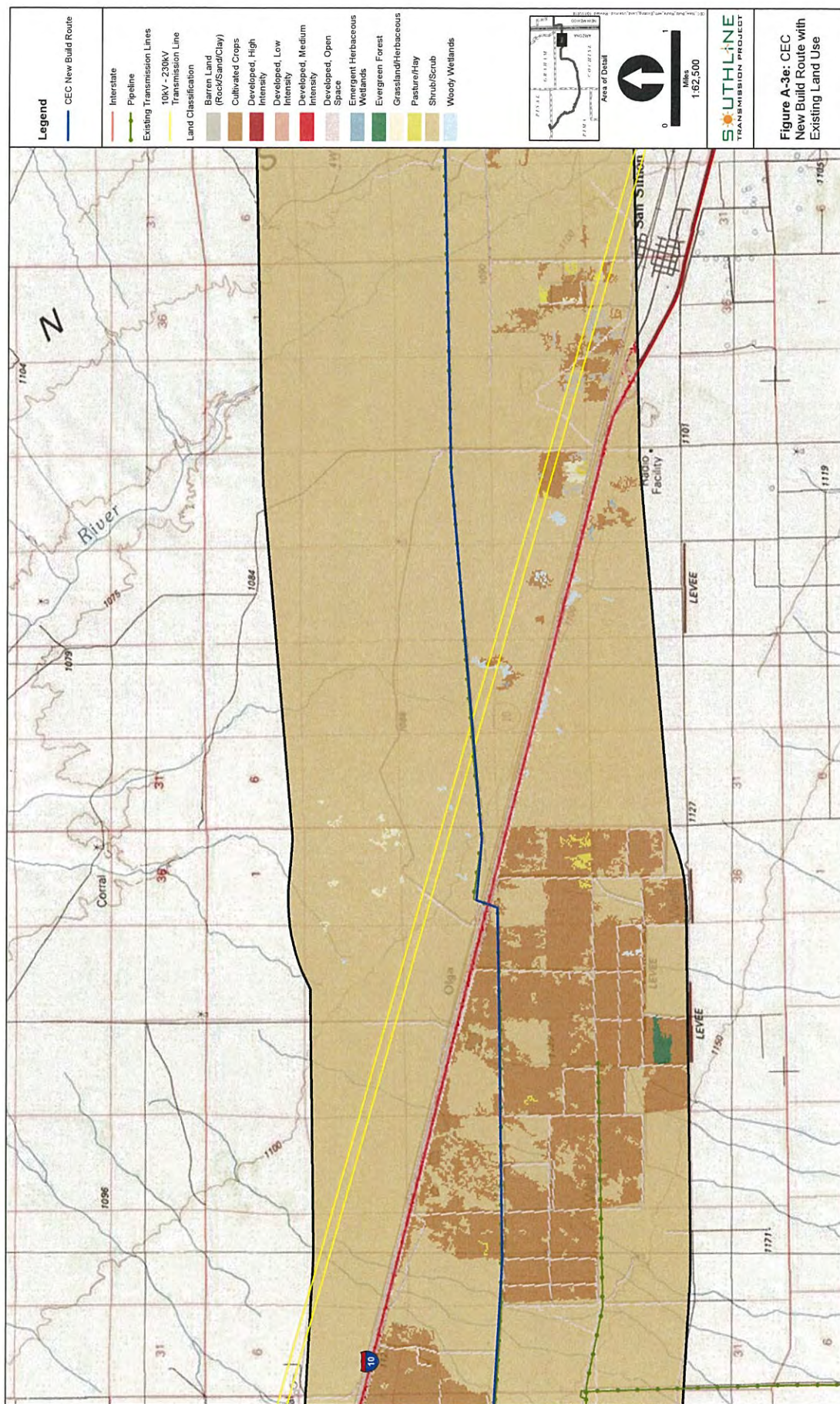
¹ Homer, C.G., Dewitz, J.A., Yang, L., Jin, S., Danielson, P., Xian, G., Coulston, J., Herold, N.D., Wickham, J.D., and Megown, K., 2015, Completion of the 2011 National Land Cover Database for the conterminous United States-Representing a decade of land cover change information. *Photogrammetric Engineering and Remote Sensing*, v. 81, no. 5, p. 345-54. National Land Cover Database 2011 *available at* <http://www.mrlc.gov/nlcd2011.php>. Downloaded August 31, 2016.

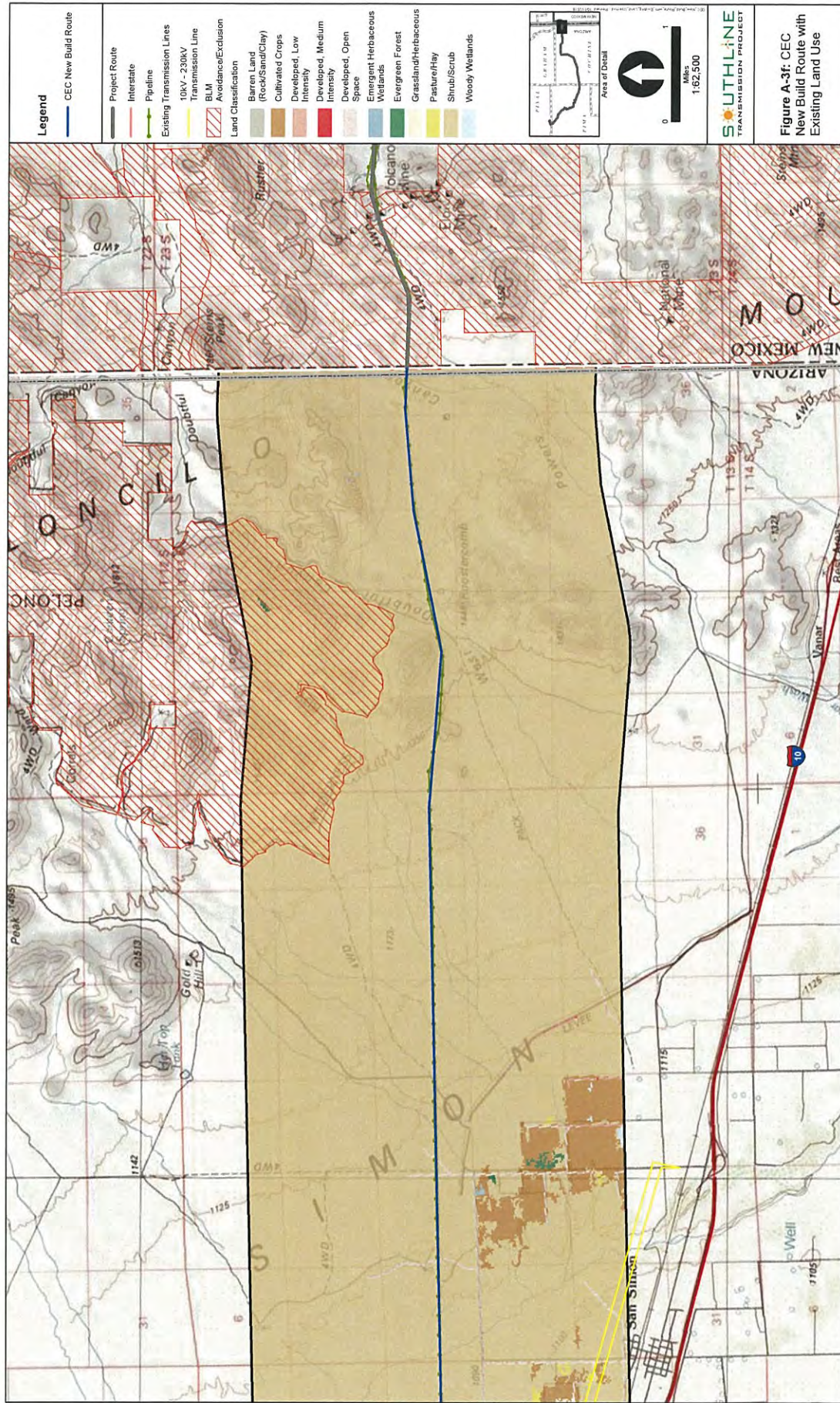


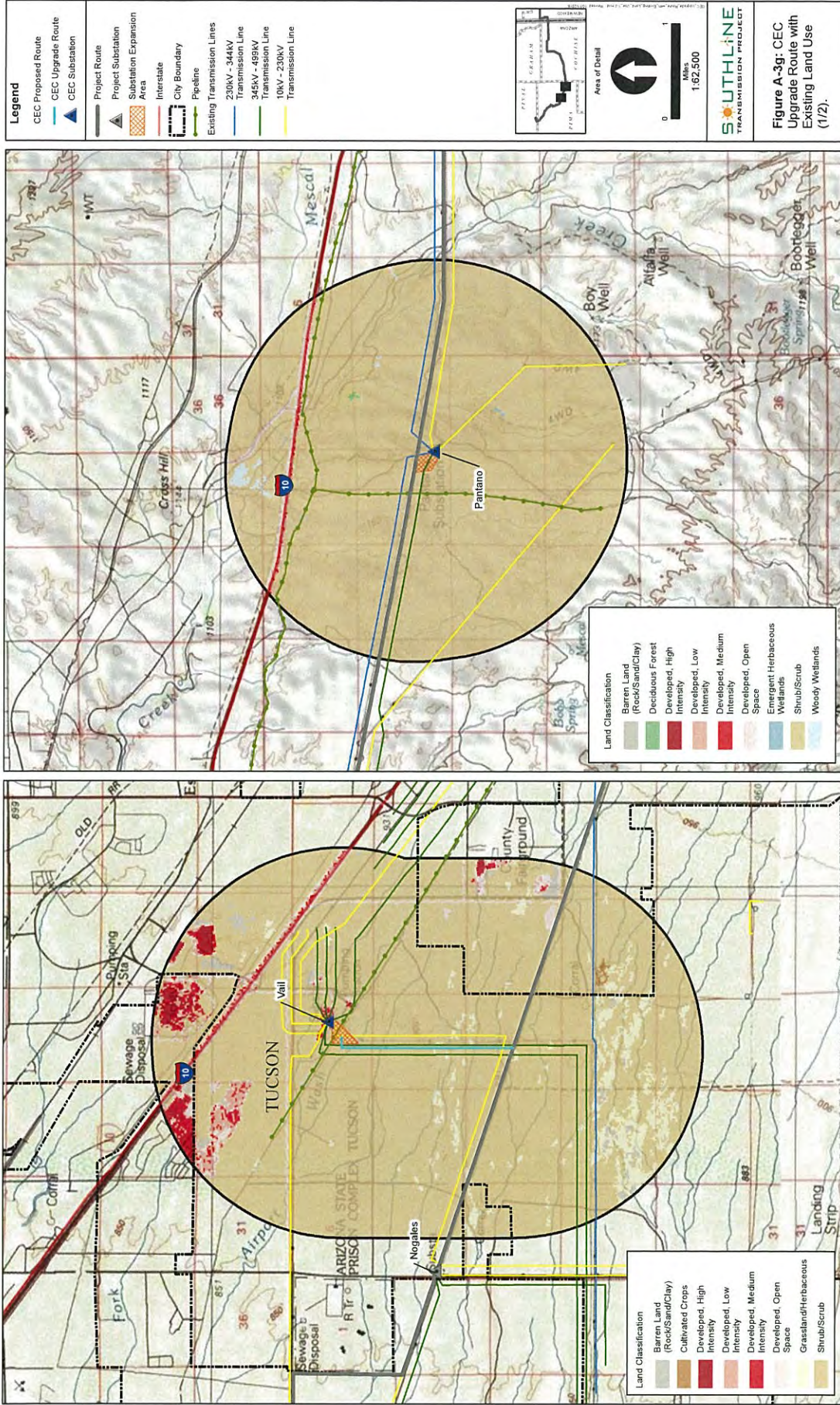












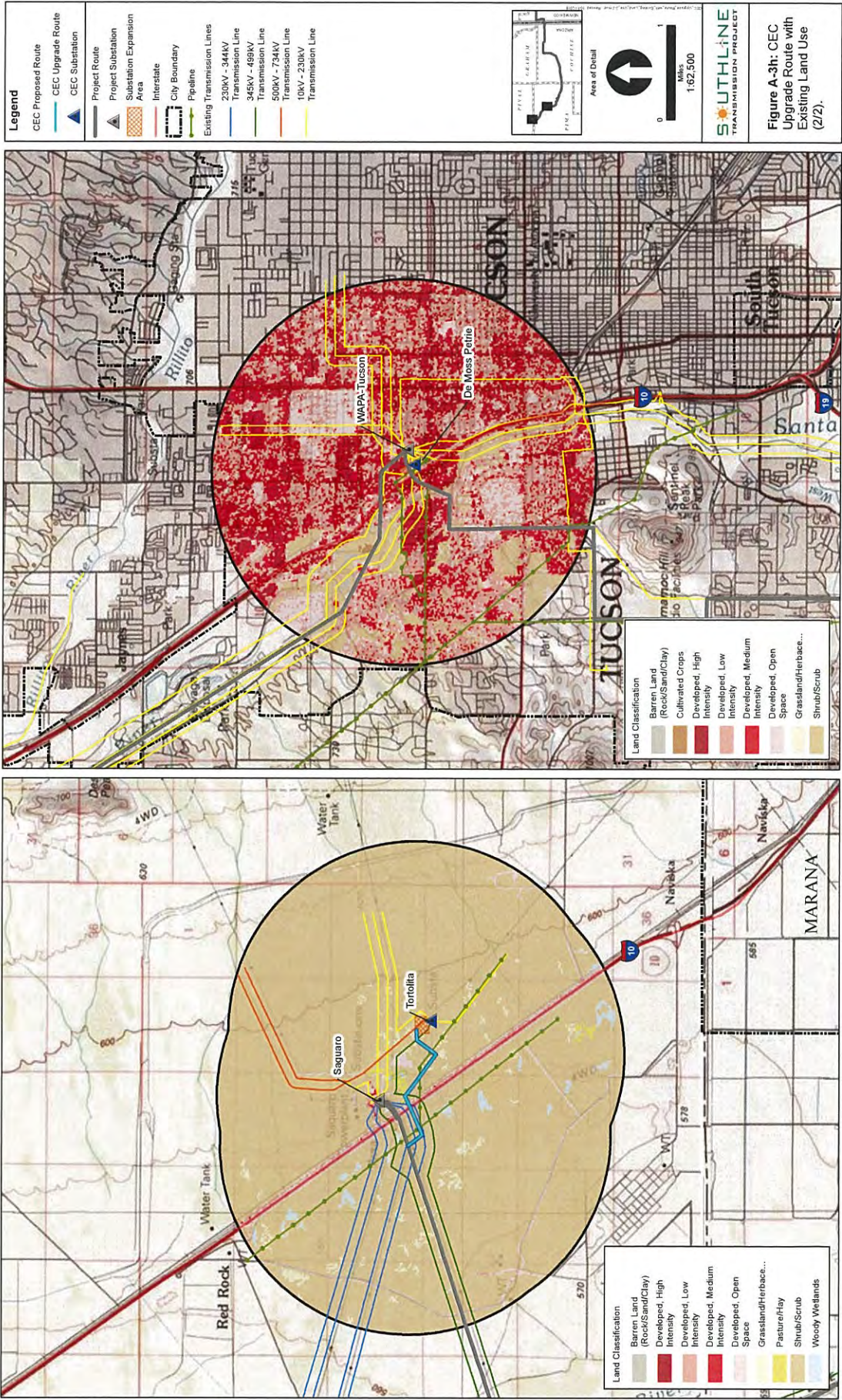


EXHIBIT A-4 – Future Land Use

Figures A-4a through A-4h provide maps showing the CEC Proposed Route and adjacent area on a topographic map at 1:62,500 scale. The CEC New Build Route is depicted on Figures A-4a through A-4f. The CEC Upgrade Route is depicted on Figures A-4g and A-4h. Jurisdiction and future land use is also included on these maps.

Future land use is based on GIS data from Cochise,² Pima,³ and Pinal⁴ Counties' respective Land Use Plans.

² Cochise County. 2015. Cochise County Comprehensive Plan *available at* <https://www.cochise.az.gov/GIS/Planning/ComprehensivePlan.html>. Accessed September 2016.

³ Pima County. 2009 (amended through 2015). Pima Prospers: Pima County Comprehensive Plan Initiative, *available at* <http://webcms.pima.gov/cms/One.aspx?portalId=169&pageId=35831>. Accessed September 2016.

⁴ Pinal County. 2015. Pinal County Comprehensive Plan, as amended, *available at* <http://pinalcountyaz.gov/CommunityDevelopment/Planning/Documents/00%20Comprehensive%20Plan%202015.pdf>. Accessed September 2016.

